

condi

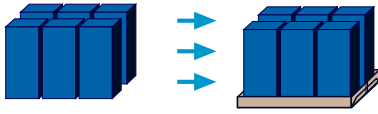


international packaging

Technical Data

Tray Packer Condi Film Famille PB

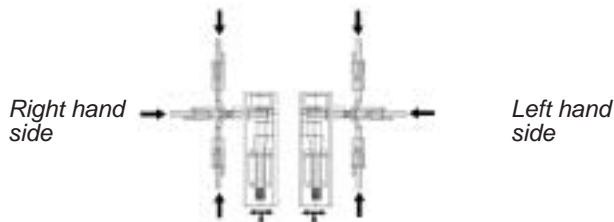
PB 12 - Cardboard



Technical data

Installation drawing : N° 4 99 401
 Maximum cycles per minute :32
 Maximum packages per hour :18 000
 Change over times : ± 5 min
 (for a well trained technician)

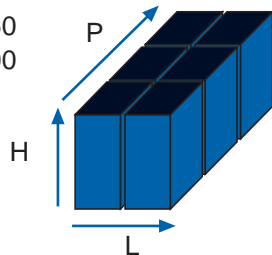
Selection operator side



Range of product able to run in this machine
 Any bircks or packages includes in the following dimensions

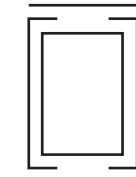
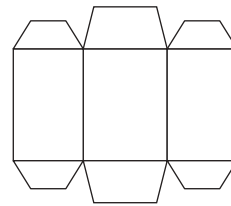
Range of collation

| | P | L |
|------|----------------|-----|
| | non adjustable | |
| Min. | 150 | 150 |
| Max. | 400 | 400 |



Cardboard and Folding

Handlind direction →



Folding Tray



Cardbord - Dimensions mini / maxi

| | P | L |
|-------|-----------------------|-----|
| | Non adjustable | |
| Mini. | 300 | 250 |
| Max. | 950 normal 1100 WA | 840 |

Arrangements

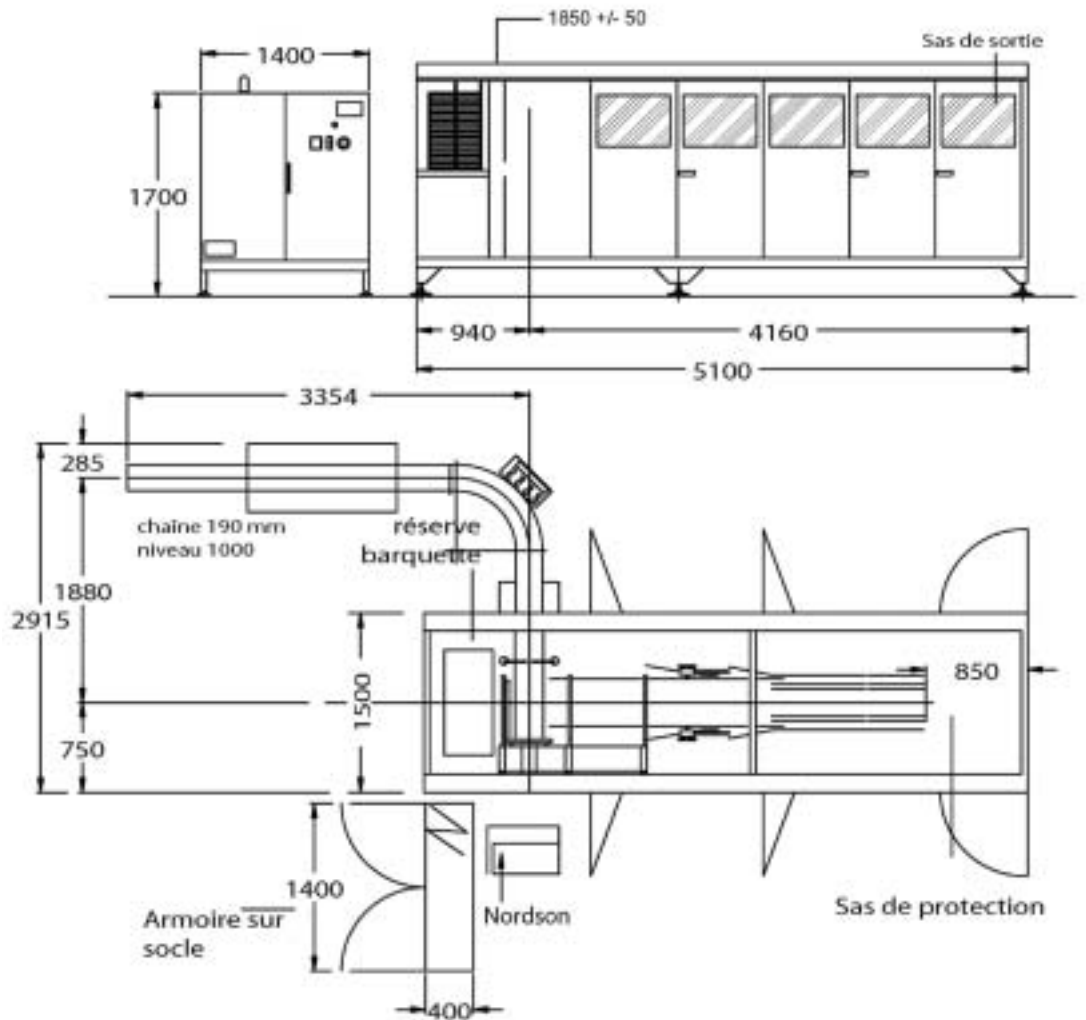
2x2,
 3x2, 3x3,... 3x9, 3x10
 4x2, 4x3,...4x6, 4x10
 5x1, 5x2,... 5x6
 following dimensions



Condi Film

Tray Packer Condi Film Famille PB

PB 12 - Cardboard



Compressed air

Dry compressed air : 6 bars
 Consumption : 5 Nm³/h
 Connection Thread : G1/2" internal
 Connexion Machine : voir plan d'implantation

Electricity

Supply voltage : 3N – 50Hz 400/230V
 Capacity to be installed : 10 kW
 Protection : Main Interrupter
 Cable aera (min) : 25mm²
 ICC : Customer supply

| | |
|--------------------------------|--|
| Bon pour accord client | |
| Direction Cie Condi Film | |
| Direction Cie Condi Film | |
| Chef de fabrication Condi Film | |

| | | | | |
|---|--|-----------|------|------|
| CONDIFILM 20 Rue de Thennes 80110 Moreuil | | CONDIFILM | | DJ |
| CONDIFILM 20 Rue de Thennes 80110 Moreuil | | CONDIFILM | | |
| Plan N° 4 99 401 | | CONDIFILM | | |
| PB 12 | | Ech. | 1/50 | Rev. |